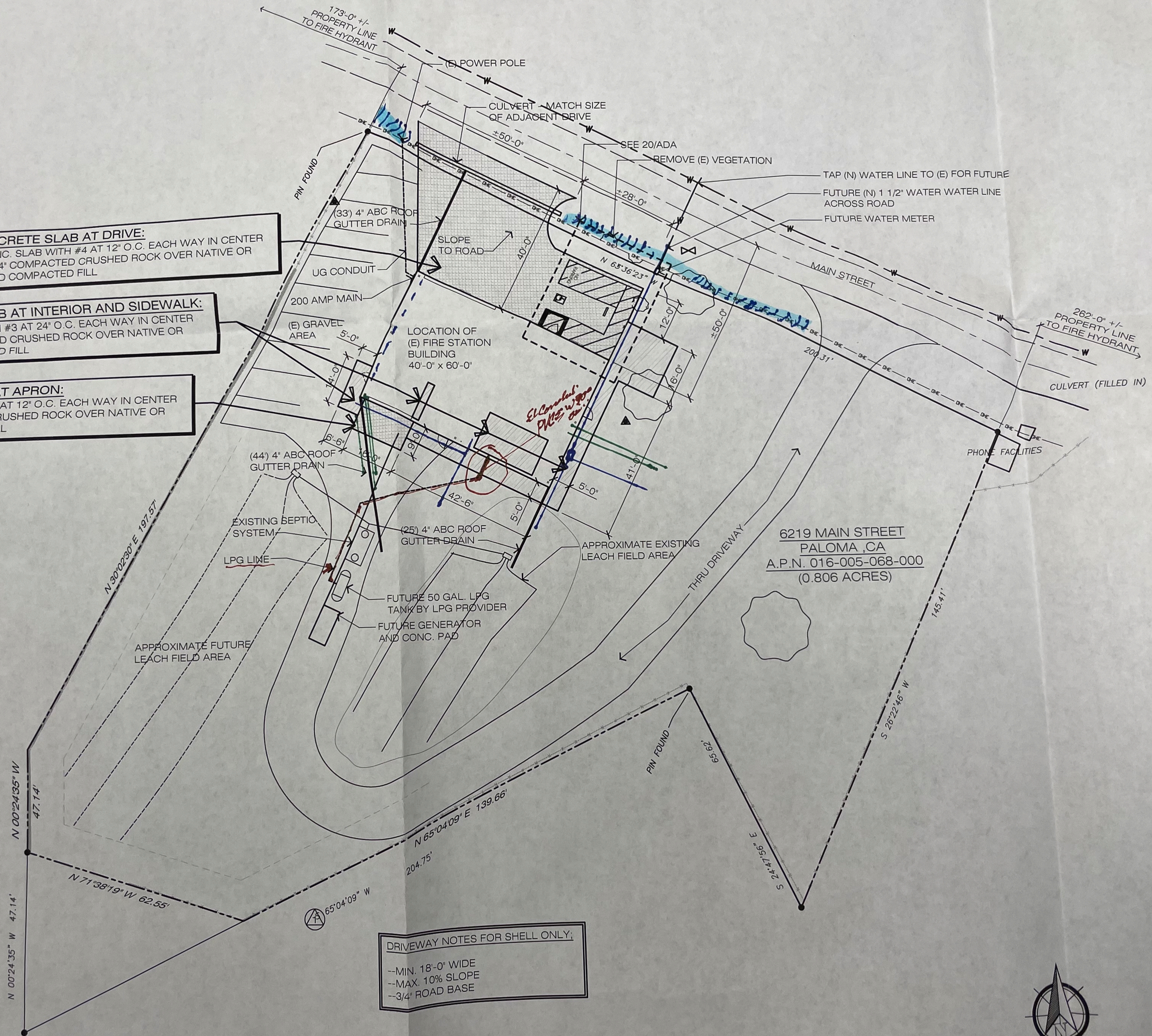


CONCRETE SLAB AT DRIVE:
 5" CONC. SLAB WITH #4 AT 12" O.C. EACH WAY IN CENTER
 OVER 4" COMPACTED CRUSHED ROCK OVER NATIVE OR
 TESTED COMPACTED FILL

CONCRETE SLAB AT INTERIOR AND SIDEWALK:
 5" CONC. SLAB WITH #3 AT 24" O.C. EACH WAY IN CENTER
 OVER 4" COMPACTED CRUSHED ROCK OVER NATIVE OR
 TESTED COMPACTED FILL

CONCRETE SLAB AT APRON:
 5" CONC. SLAB WITH #4 AT 12" O.C. EACH WAY IN CENTER
 OVER 4" COMPACTED CRUSHED ROCK OVER NATIVE OR
 TESTED COMPACTED FILL

DRIVEWAY NOTES FOR SHELL ONLY:
 --MIN. 18'-0" WIDE
 --MAX. 10% SLOPE
 --3/4" ROAD BASE



6219 MAIN STREET
 PALOMA, CA
 A.P.N. 016-005-068-000
 (0.806 ACRES)

BUILDING
 SITE INFORMATION
 DESCRIPTION
 BUILDING
 BUILDING
 OCCUPANCY
 OCCUPANCY
 CONSTRUCTION
 FIRE SEPARATION
 DEFERRAL